

Installing the .wwf toolkit under Windows

Hans Bezemer

February 3, 2011

1 Introduction

Converting a PDF file to .wwf is so trivial under Linux that a bunch of shell scripts is enough to perform that task. Running Unix shell scripts under Windows means you have to trick Windows in thinking it is running a Windows program and the shell scripts in thinking they're running in a Unix environment. Note I tried Win98 as well, but that didn't work. You will need WinXP at least.

2 Preparation

First, you have to download all components:

- MSYS 1.0.10 (<http://sourceforge.net/projects/mingw/files/MSYS/BaseSystem/msys-core/msys-1.0.10/MSYS-1.0.10.exe/download>)
- WGET 1.11.4 (<http://users.ugent.be/~bpuyte/cgi-bin/fetch.pl?dl=wget/wget.exe>)
- Poppler-utils 0.15 (<http://www.outsch.org/wp-content/uploads/2010/09/poppler-utils.zip>)
- Ghostscript 9.0.0 (<http://sourceforge.net/projects/ghostscript/files/GPL-Ghostscript/9.00/gs900w32.exe/download>)
- PDFtk 1.44 (<http://www.pdflabs.com/tools/pdftk-the-pdf-toolkit/pdftk-1.44-win.zip>)
- Zenity 2.28.0 (http://www.placella.com/software/zenity/downloads/zenity-2.28.0_win32-3.exe)
- BGstart 0.0.1 (http://www.placella.com/software/bg_start/bg_start-0.0.1.exe)
- .wwf toolkit 1.7 (<http://www.xs4all.nl/~thebeez/4tH/wwftk-1.7.tar.gz>)

If you don't know what your Windows directory is issue this at the prompt:

```
echo %windir%
```

You can get a prompt by starting `cmd.exe`. I will refer to the Windows directory as `C:\WINDOWS`.

3 Installing WGET

Place the executable in `C:\WINDOWS` - or whatever your Windows directory may be.

4 Installing Poppler-utils

Unzip the archive and place all executables in `C:\WINDOWS`.

5 Installing PDFtk

Unzip the archive. You will only need the files in the bin directory. Place `pdftk.exe` in `C:\WINDOWS` and `libiconv2.dll` in `C:\WINDOWS\SYSTEM32`. *Be sure not to overwrite previous versions!!*

6 Installing Zenity

Simply accept all defaults, including the path. Install it on the C:-drive if you can, it will make your life much easier.

7 Installing BGstart

Simply accept all defaults, including the path. Install it on the C:-drive if you can, it will make your life much easier.

8 Installing MSYS

You may also take the newer 1.0.11, but note that version has packaging errors. Simply accept all defaults, including the path. Install it on the C:-drive if you can, it will make your life much easier.

```
C:\msys\1.0\postinstall>PATH ..\bin;C:\WINDOWS;C:\WINDOWS\COMMAND
C:\msys\1.0\postinstall>..\bin\sh.exe pi.sh

This is a post install process that will try to normalize between
your MinGW install if any as well as your previous MSYS installs
if any. I don't have any traps as aborts will not hurt anything.
Do you wish to continue with the post install? [yn ] y

Do you have MinGW installed? [yn ] n

When you install MinGW I suggest you install it to C:/mingw
(replace C: with the drive of your choice). Then create an
/etc/fstab file with a line that has a value similar to:
C:/mingw /mingw
Press ENTER to continue
```

Figure 1: Installing MSYS

Finally, a console will pop up, posing you two questions:

1. Will you continue the postinstallation [YES]
2. Have you installed MinGW? [UNLIKELY]

If you installed MinGW before (which is a C-compiler) you probably already have MSYS anyway.

9 Installing Ghostscript

Simply accept all defaults, including the path. Install it on the C:-drive if you can, it will make your life much easier.

The Windows-version of Ghostscript fortunately comes with Unix scripts of the major utilities. They are all located in the `lib` directory. You have to add this directory to the path so MSYS can find them. That's not very hard. Simply click the "My computer" icon, then click "Control Panel" and finally "System".

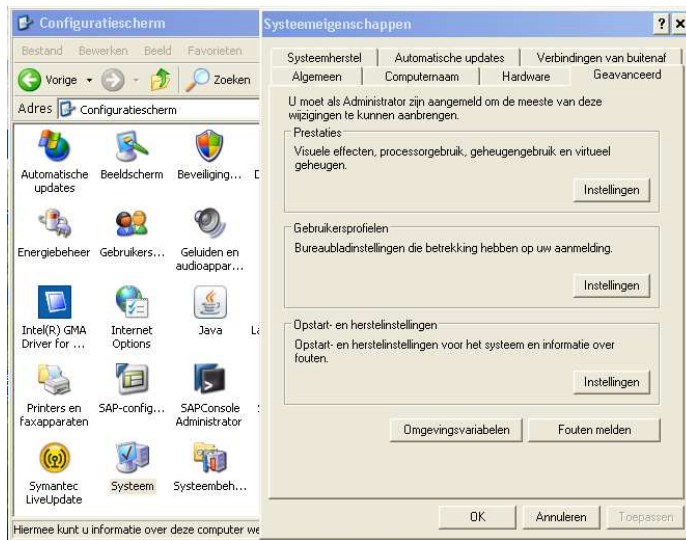


Figure 2: Opening Control Panel

Choose the tab "Advanced" and click the button "Environment variables":

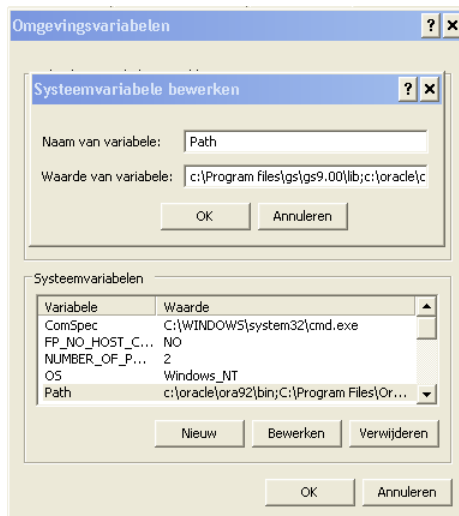


Figure 3: Changing Path

Choose "System variables", then "Path" and add the directory in question up front. Usually, this will be something like `C:\Program files\gs\9.00\lib`.

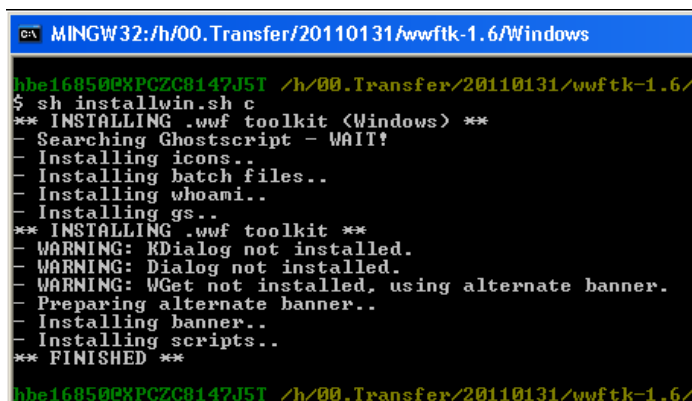
10 Installing .wwf toolkit

MSYS has left an icon on your desktop. Click it. Then navigate to the `wwftk-1.7.tar.gz` archive. You can use `cd` as usual, no need to change drives.

Note backslashes become slashes and drives become directories, e.g. `H:\download\wvftk-1.7.tar.gz` becomes `/h/download/wvftk-1.7.tar.gz`. If the path contains embedded spaces, enclose it with double quotes. Assuming the archive is located at `H:\download`, issue:

```
cd /h/download
tar -xzf wvftk-1.7.tar.gz
cd wvftk-1.7/Windows
sh installwin.sh c
```

If Ghostscript wasn't installed on the C:-drive adjust accordingly. If all goes well, you'll see the following screen:



```
C:\ MINGW32:/h/00.Transfer/20110131/wvftk-1.6/Windows
hbe169500XPCZC8147J5T /h/00.Transfer/20110131/wvftk-1.6/
$ sh installwin.sh c
** INSTALLING .wvft toolkit (Windows) **
- Searching Ghostscript - WAIT!
- Installing icons..
- Installing batch files..
- Installing whoami..
- Installing gs..
** INSTALLING .wvft toolkit **
- WARNING: KDIALOG not installed.
- WARNING: Dialog not installed.
- WARNING: WGet not installed, using alternate banner.
- Preparing alternate banner..
- Installing banner..
- Installing scripts..
** FINISHED **
hbe169500XPCZC8147J5T /h/00.Transfer/20110131/wvftk-1.6/
```

Figure 4: Installing .wvft toolkit

After that, .wvft tools is installed.

11 Post installation

You probably want to start the .wvft tools from the screen. All you have to do is to make two shortcuts. First, click right on the desktop and select "Shortcut":

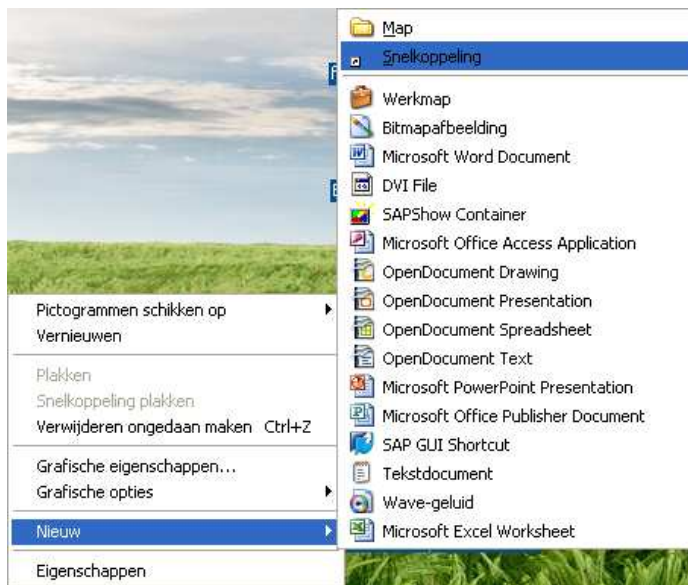


Figure 5: Creating shortcut

Second, choose "Browse" and navigate to `C:\msys\1.0\share\wvftk\bg_pdf2wwf.bat`.



Figure 6: Selecting batchfile

Third, choose a name for this shortcut. I prefer **PDF2wwf**.

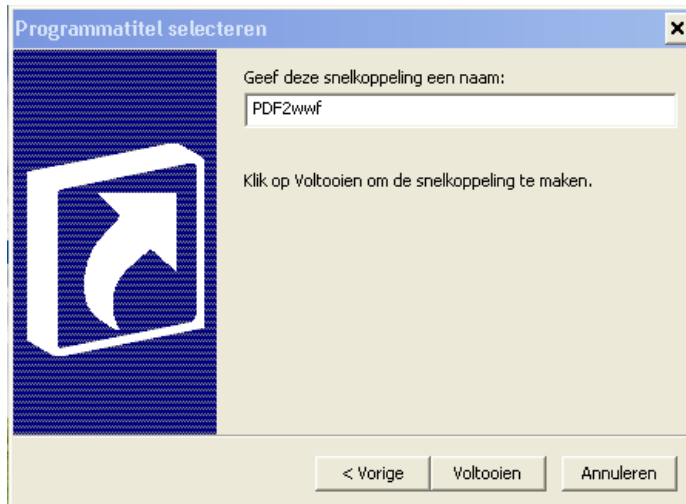


Figure 7: Naming shortcut

Basically, the shortcut has been created now, but it is not very attractive. Right click it and choose "Properties".



Figure 8: Selecting properties

Click "Change icon" and "Browse".

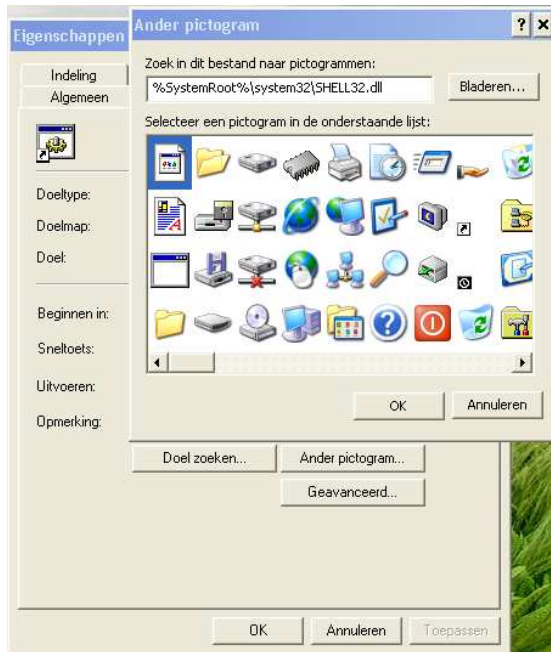


Figure 9: Changing icon

Navigate to `C:\msys\1.0\share\wvftk`.

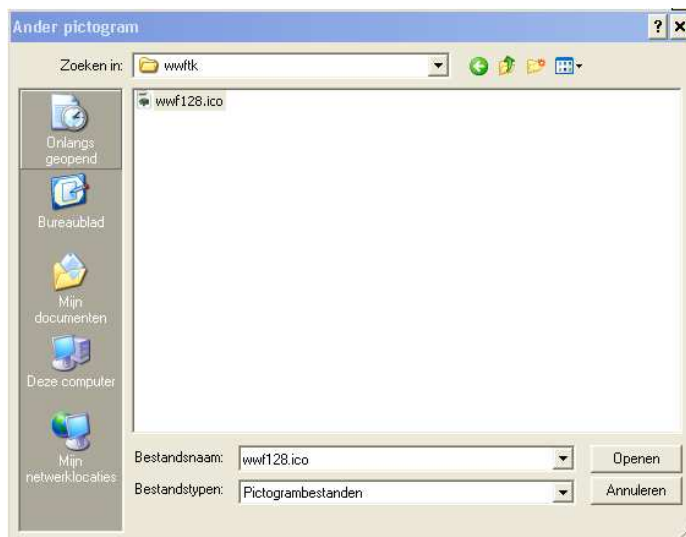


Figure 10: Selecting icon file

Select `wvftk128.ico`.

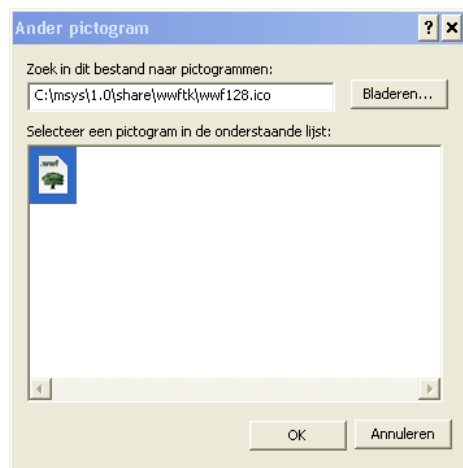


Figure 11: Selecting icon

Select the appropriate icon and press "Ok". Repeat the same procedure for `wwf2pdf` and you're done.