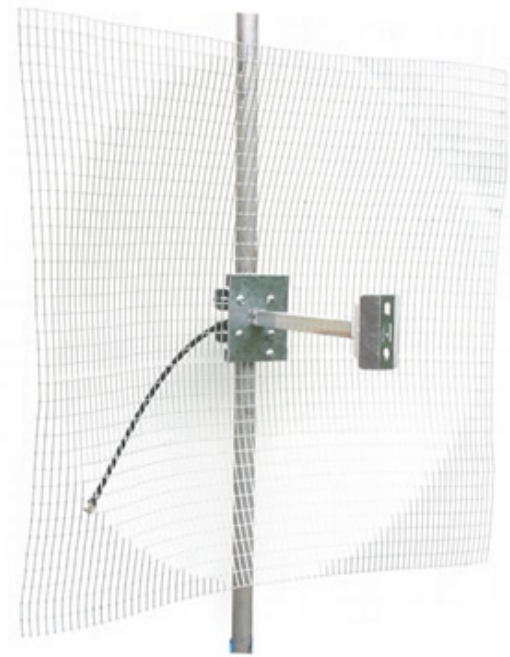




# SD27 mesh antenna 24 dBi gain



Light weight because of the use of 2 mm mesh

Very strong antenna for 2.4 to 2.5 GHz

High quality materials used

Type N male connector

Individually tested

Gain 24 dBi

Completely weather proof

Dipole sealed for long lifespan

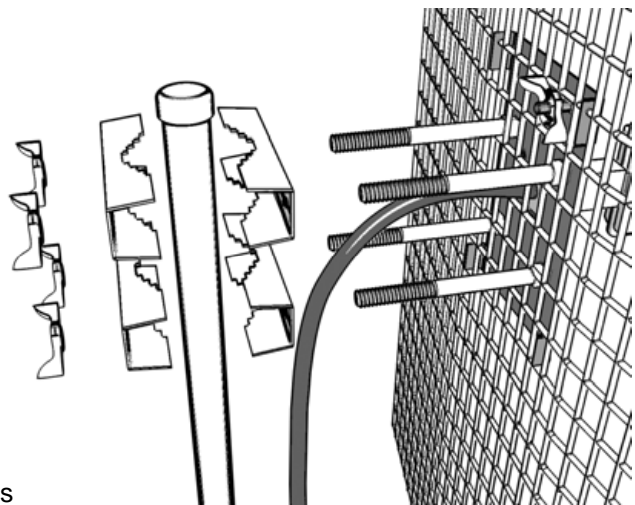
Horizontal or vertical polarization

Ideal for very long connections 802.11B/G

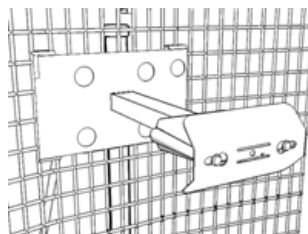
Mesh reflector blends easy with any environment

## Specifications

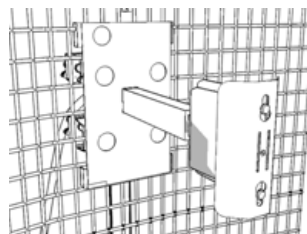
|                  |   |
|------------------|---|
| Frequency Range  | 2400 - 2500 MHz                                 |
| Gain             | 24 dBi  |
| VSWR             | 1.3 : 1 typical                                 |
| Impedance        | 50 Ohm  |
| Front/back ratio | 34 dB   |
| Connector        | Type N-male                                     |
| Polarization     | Linear, Hor/Vert                                |
| Max. RF power    | 50 W  |
| Max. wind load   | 216 km/u  |
| Weight           | 5 kg  |
| Dimension (mm)   | 91 cm x 91 cm                                   |
| Mounting         | Mounting hardware fits<br>25 – 50 mm mast tubes |



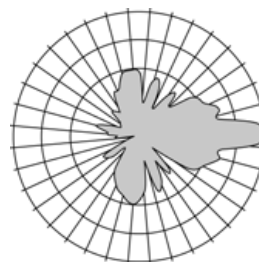
*Tough pole mount included*



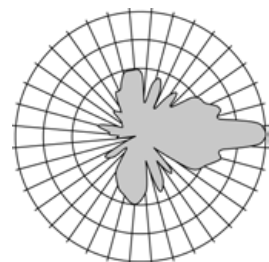
*Horizontal polarized*



*Vertical polarized*



*Horizontal polarized  
azimuth pattern*



*Vertical polarized  
azimuth pattern*

