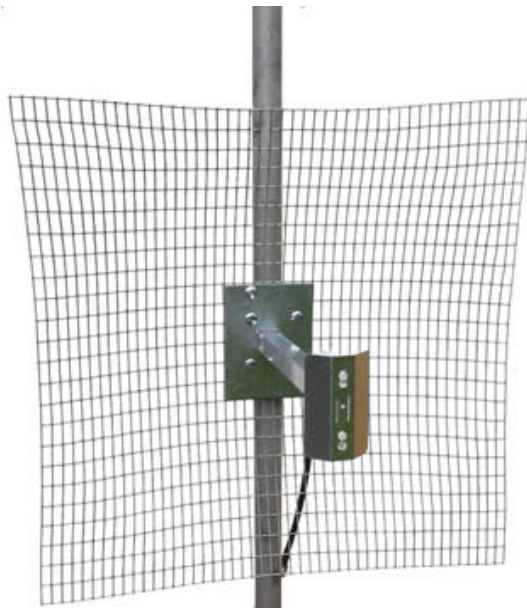




SD21 mesh antenna 20,5 dBi gain



Light weight because of the use of 2 mm mesh

Strong antenna for 2.4 to 2.5 GHz

High quality materials used

Type N-male connector

Individually tested

Gain 20,5 dBi

Completely weather proof

Dipole sealed for long lifespan

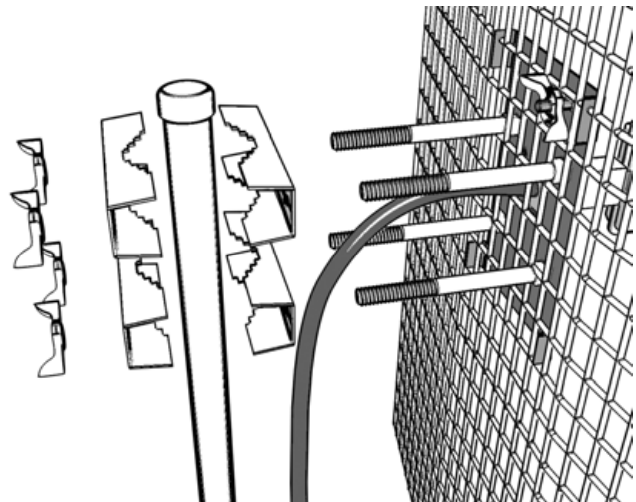
Horizontal or vertical polarization

Ideal for long range client connections

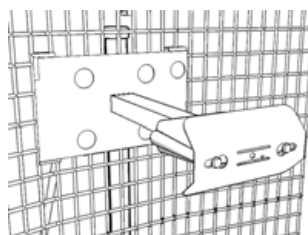
Mesh reflector blends easy with any environment

Specifications

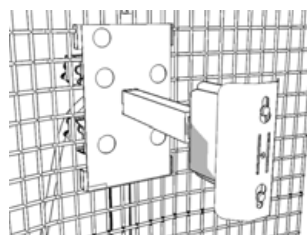
Frequency Range	2400 - 2500 MHz
Gain	20,5 dBi
VSWR	1,3 : 1 typical
Impedance	50 Ohm
Front/back ratio	28 dB
Connector	Type N-male
Polarization	Linear, Hor/Vert
Max. RF power	50 W
Max. wind load	216 km/u
Weight	3,5 kg
Dimension (mm)	61 cm x 61 cm
Mounting	Mounting hardware fits 25 – 50 mm mast tubes



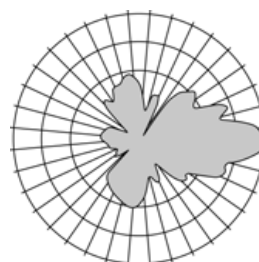
Tough pole mount included



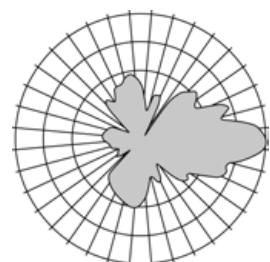
Horizontal polarized



Vertical polarized



Horizontal polarized azimuth pattern



Vertical polarized azimuth pattern

