



# WRC2 High power 2.4 GHz Client/AP with routing function

High speed 11 Mbps (802.11b) or 54Mbps (802.11g) data rate

High power (250mW) output for long range radio link

POE built-in for single cable installation

Adjustable RF output power

64/128-bit WEP support

Bandwidth management

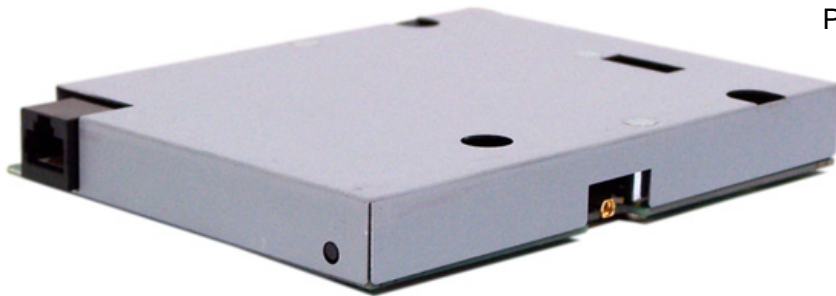
Web-based / SSH management tool

WPA with PSK, TKIP & AES support

AP client with WDS and Routing (WISP mode)

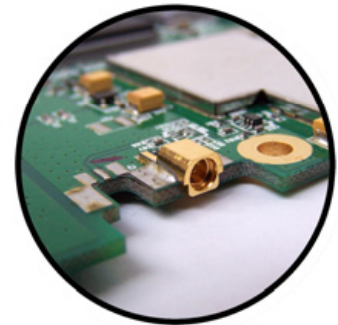
Industrial temperature range from -30 C to + 60 C

PCB for integration in indoor or complete outdoor solutions



## Specifications

OS	Linux with 2.4.18 kernel
IEEE Standard Compliance	IEEE 802.11b 2.4GHz OFDM IEEE 802.11g 2.4GHz CCK
Frequency Range	2.4 GHz – 2.485 GHz
Channel Support	ETSI: 13 channels
Data Rate	802.11b: 11 / 5,5 / 2 / 1 Mbps 802.11g: 54 / 48 / 36 / 24 / 12 / 9 / 6 Mbps
RF output power stepping	802.11b: 100 , 150 , 200 , 250 mW 802.11g: 50 , 100 mW
Sensitivity	802.11g: -76 +/- 2dBm @ 54Mbps 802.11b: -86 +/- 2dBm @ 11Mbps
Output power	200mW @ 11Mbit 802.11b 100mW @ 54Mbit 802.11g
Operating mode	AP client with routing function (WISP mode) Wireless access point AP client (Wifi to Ethernet bridge) WDS (Wireless repeater; P –to- P, P –to- MP bridge) Wireless router
Security	Password protection MAC filtering Hidden SSID broadcast 64 / 128-bit WEP encryption WAP for 802.1x and WPA-PSK WAP2 / IEEE 802.11i
Management	Web interface Full control by SSH connection
Antenna connector	MMCX
Power	10V to 48 V Power over Ethernet
Operating environment	Temperature -30C to 60C Humidity 10 – 90% (non condensing)
Certification	CE
Wi-Fi Complaint	2.4 GHz band (802.11b) 2.4 GHz band (802.11g) WPA and WPA2



Antenna connector MMCX



Built-in Led indicator

