

Recueil de jolis airs arrangés pour la guitare

par Mr Rose



Edité par Richard Civioli

RCLuthprod.....2003

Table of Contents

- 1 - Malbrouk
- 2 - Contredanses l'air infflamable
- 3 - Menuetto
- 4 - Des Vandangeurs cest donc demain
- 5 - De Blaise et Babet Lise chantoit dans
- 6 - Vivre sans Amour
- 7 - Menuet de la cour
- 8 - Gavotte
- 9 - De Julie lison dormait
- 10 - Le connais tu
- 11 - J'ai six fois
- 12 - il pleut Bergère
- 13 - Tandis que tout sommeille
- 14 - Menuet de Ficher
- 15 - Menuet
- 16 - Vous qui de l'Amoureuse
- 17 - De Blaise et Babet chantons l'himen

MALBROUK

6

8

17

CONTREDANSES L'AIR INFFLAMABLE

6

7

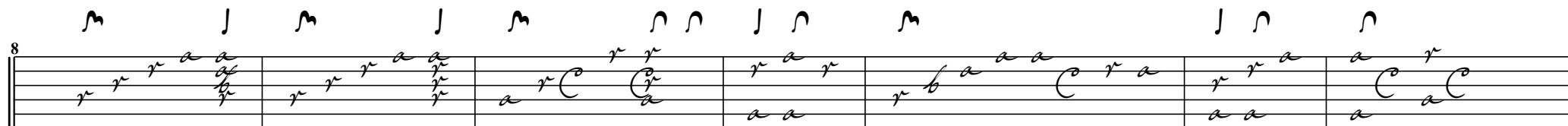
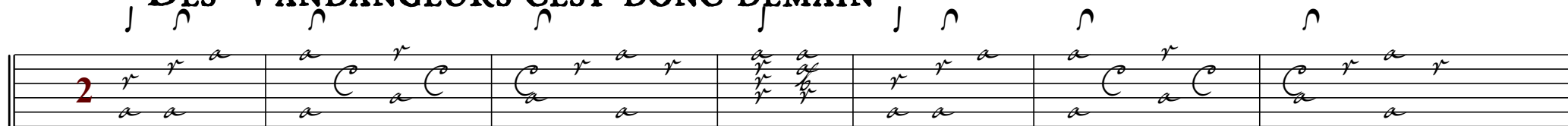
15

21

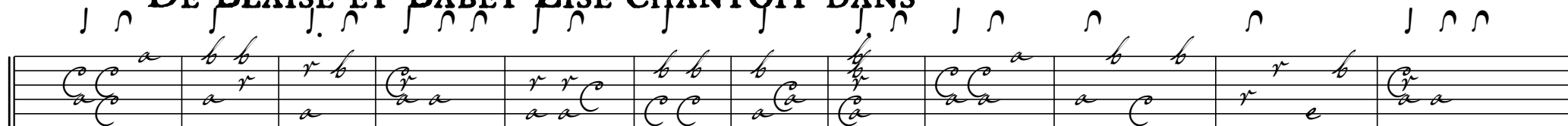
MENUETTO

10

DES VANDANGEURS CEST DONC DEMAIN



DE BLAISE ET BABET LISE CHANTOIT DANS



24

36

VIVRE SANS AMOUR

6

11

19

31

40

MENUET DE LA COUR

3

8

fine

16

21

Da capo

GAVOTTE

2

7

15

21

28

DE JULIE LISON DORMAIT

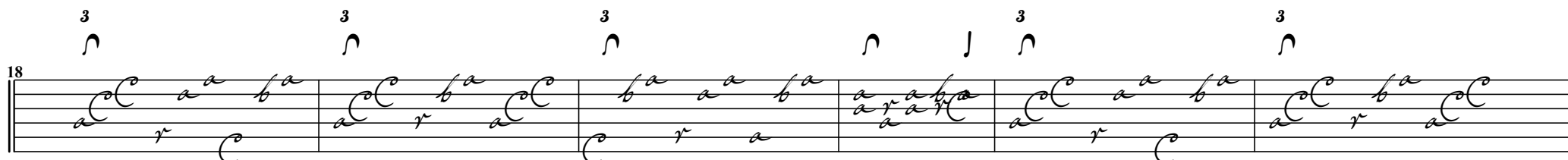
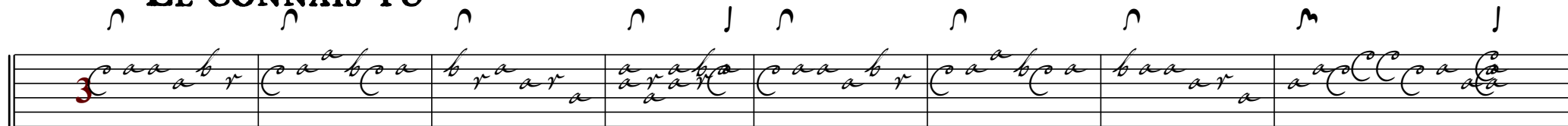
2

8

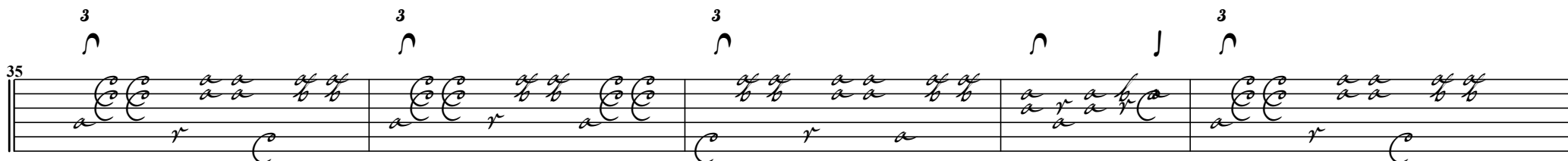
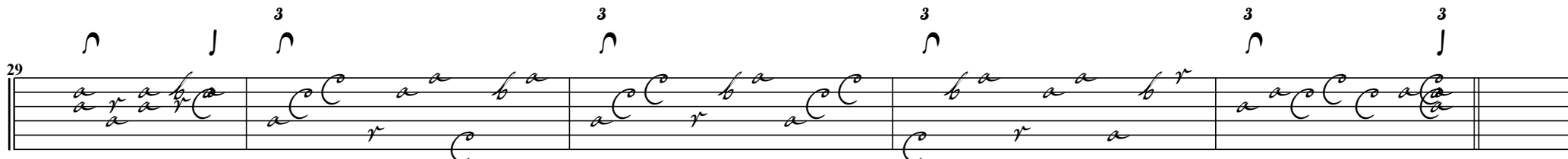
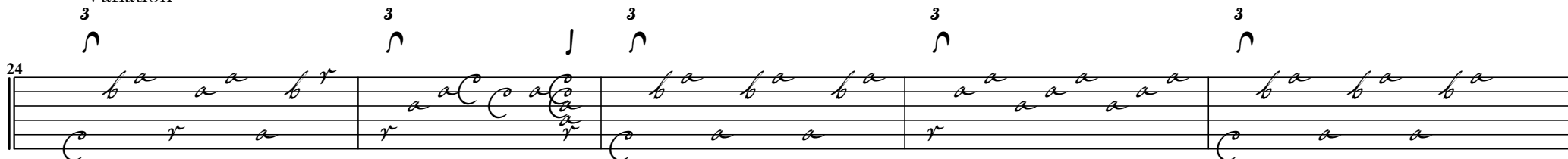
13

18

LE CONNAIS TU



Variation



2e Variation

11

Handwritten musical score for three voices (Soprano, Alto, Tenor) in G major, measures 11-14. The notation is complex, featuring many beamed notes and rests. The lyrics are written below the notes.

Measures 11-14:

Measures 11-12: Soprano: b r b | a b c a b a | Alto: a a c | Tenor: a a c a a c

Measures 13-14: Soprano: a b a | c a b a b r | Alto: a a | Tenor: r r

Measures 15-16: Soprano: a b a | c a b a b r | Alto: a a | Tenor: a a

Measures 17-18: Soprano: c a b | c a b a b r | Alto: a a | Tenor: a a

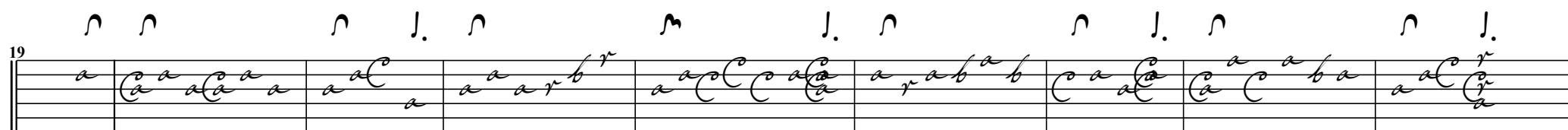
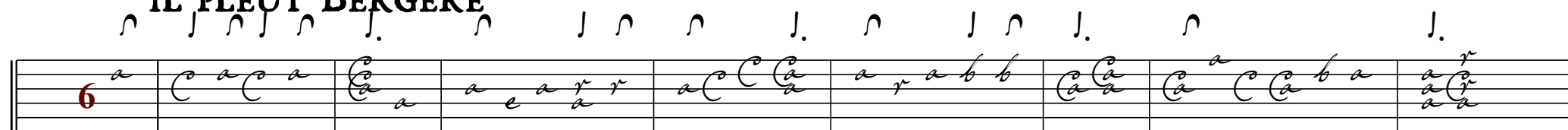
Measures 19-20: Soprano: c a | c a | Alto: a a | Tenor: a a

28

Handwritten musical notation on a five-line staff. The notation consists of letters (a, b, r, f) and rhythmic symbols (vertical lines with flags) placed on and around the staff lines. Above the staff, there are groups of letters: 'm' above the first measure, 'l. l n n' above the second, 'l. l m m' above the third, and 'l. l n m' above the fourth. The notation is written in a cursive, handwritten style.

Handwritten musical notation for measures 35-39 of 'The Rose Tree'. The notation is written on a five-line staff. Above the staff, there are rhythmic markings: 'J. J M M' for measures 35-36, 'J. J M M' for measures 37-38, and 'J. J' for measure 39. The notes are written in a cursive style. Measure 35 starts with a treble clef and a common time signature 'C'. The notes are 'a', 'r', 'b', 'a'. Measure 36 continues with 'a', 'r', 'b', 'a', 'a', 'r', 'b', 'a', 'r'. Measure 37 starts with a new treble clef and common time signature, with notes 'a', 'b', 'a'. Measure 38 continues with 'a', 'r', 'b', 'a', 'a', 'r', 'b', 'a', 'r'. Measure 39 starts with a new treble clef and common time signature, with notes 'a', 'b', 'a'. The notation ends with a double bar line.

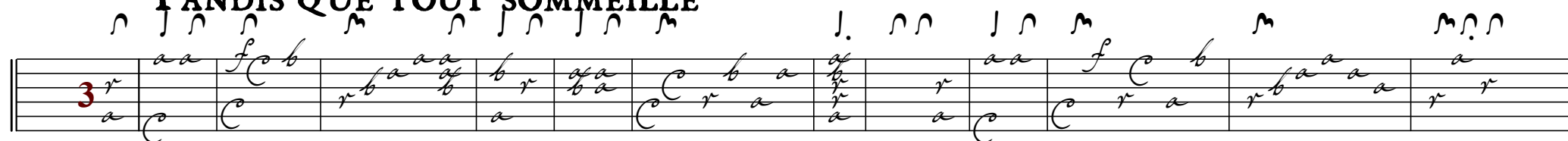
IL PLEUT BERGÈRE



Variation



TANDIS QUE TOUT SOMMEILLE



14

Musical notation for guitar, measures 14-22. The notation includes rhythmic values (M, N, J) and notes (r, b, a, f) on a five-line staff.

23

Musical notation for guitar, measures 23-33. The notation includes rhythmic values (J, N, M) and notes (C, b, a, f) on a five-line staff.

34

Musical notation for guitar, measures 34-42. The notation includes rhythmic values (J, N, M) and notes (C, b, a, f) on a five-line staff.

♯ MENUET DE FICHER

3

Musical notation for guitar, measures 1-6 of the Minuet. The notation includes rhythmic values (M, N, J) and notes (a, r, x, b, e, f) on a five-line staff.

7

Musical notation for guitar, measures 7-12 of the Minuet. The notation includes rhythmic values (M, J, N) and notes (a, r, x, b, e, f) on a five-line staff.

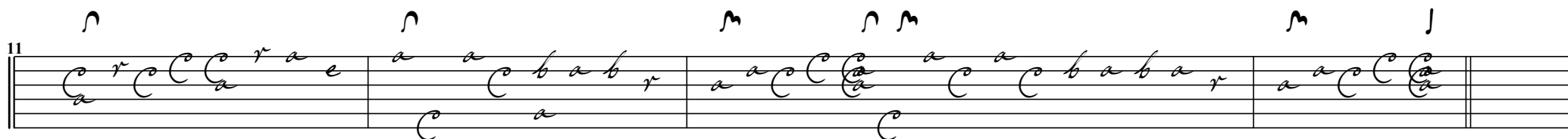
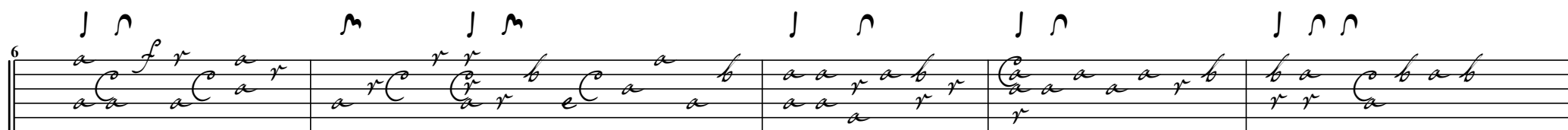
14

M *M* *M* *M* *ff*

MENUET

10

VOUS QUI DE L'AMOUREUSE



DE BLAISE ET BABET CHANTONS L'HIMEN

