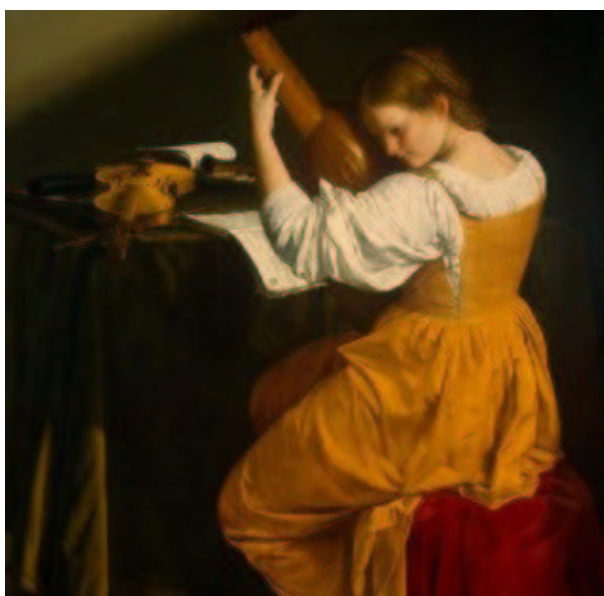


*Pièces pour Luth Allemand , Dessus et Basse*  
*De Giovanni Xropffganz*  
*Editer par Richard Civiol*



Sonate en Do Majeur; Allegretto.

Handwritten musical score for a sonata in C major, Allegretto. The score is written on a grand staff (treble and bass clefs) and includes various musical notations such as notes, rests, accidentals, and dynamic markings.

The score is divided into measures, with measure numbers 7, 13, 18, 24, 29, 34, and 38 indicated. The key signature is one sharp (F#), indicating C major. The tempo is marked Allegretto.

Key features of the notation include:

- Measure 7:** Starts with a treble clef and a 3/4 time signature. The melody begins with a quarter note G4, followed by a half note A4, and a quarter note B4.
- Measure 13:** Features a treble clef and a 4/4 time signature. The melody includes a quarter note G4, a half note A4, and a quarter note B4.
- Measure 18:** Includes a treble clef and a 4/4 time signature. The melody features a quarter note G4, a half note A4, and a quarter note B4.
- Measure 24:** Starts with a treble clef and a 4/4 time signature. The melody includes a quarter note G4, a half note A4, and a quarter note B4.
- Measure 29:** Features a treble clef and a 4/4 time signature. The melody includes a quarter note G4, a half note A4, and a quarter note B4.
- Measure 34:** Includes a treble clef and a 4/4 time signature. The melody features a quarter note G4, a half note A4, and a quarter note B4.
- Measure 38:** Starts with a treble clef and a 4/4 time signature. The melody includes a quarter note G4, a half note A4, and a quarter note B4.

The score concludes with a final measure marked *piano*.



95

h h g h a | v a v a | d v d

*Arioso*

7 13 19 26 33 40

47 50

55

60 61

*Polaca.*

4 8 10 14 15

16 17 18 19

[illegible]



1. 2 3 4 5 6 7 8 9 10 11 12 13 14 15

2

6

10

piano

forte





60 65

66 70

71

*Siciliana*

6

5

9

12

15

20

25

29

33

36

*Tempo di Minuetto.*

3

7

12

19 20

24 25

30

35

*Trio.*

7 10

14 15

20

25

32

*Polonoise.*

4

5

8

10

11

14

15



45

50

55

56

60

61

65

68

70

45 50 55 56 60 61 65 68 70

*Minuetto.*

3

6

10

3 6 10

12



30 35

30 35

*Allegro.*

2 5 6 10 12 4 15 20 25 30 31

2 5 6 10 12 4 15 20 25 30 31

[illegible]

4 *p* *f*

5

7 *piano* *forte*

10

13 15

16

19 20

22

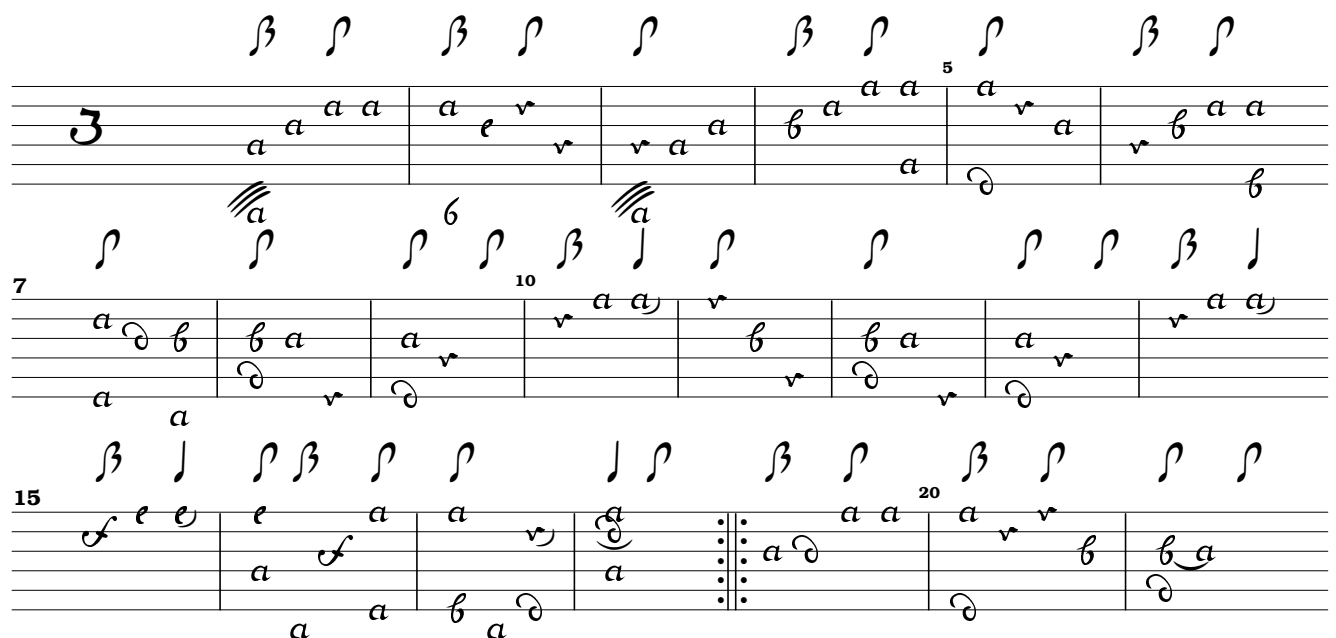
25 *piano*

28 30

6

31 

*Andantino*



22 25 29 30 35 36 40

22 25 29 30 35 36 40

*Paysanne*

2 5 7 10 13 15 18 20 24 25 30

2 5 7 10 13 15 18 20 24 25 30

3

6

12

15

18

20

24

25

30

31

# Mennet 2

Musical score for Mennet 2, measures 1-20. The score is written for a single melodic line on a five-line staff. The time signature is 3/4. The key signature has one flat (B-flat). The melody consists of eighth and sixteenth notes, with some rests. Measure numbers 1, 7, 14, and 20 are indicated at the start of their respective lines. The piece ends with a double bar line and a repeat sign.

# Polonoise

Musical score for Polonoise, measures 1-10. The score is written for a single melodic line on a five-line staff. The time signature is 3/4. The key signature has one flat (B-flat). The melody consists of eighth and sixteenth notes, with some rests. Measure numbers 1, 4, 8, and 10 are indicated at the start of their respective lines. The piece ends with a double bar line and a repeat sign.

14

15

18

20

22

forte



---

## *Table of Contents*

- 1 Sonate en Do Majeur; Allegretto. (p.2)*
- 2 Arioso (p.4)*
- 3 Polaca. (p.5)*
- 4 Sonate en Sol majeur, Entrée. (p.6)*
- 5 Paisane (p.8)*
- 6 Siciliana (p.10)*
- 7 Tempo di Minuetto. (p.11)*
- 8 Trio. (p.12)*
- 9 Polonoise. (p.13)*
- 10 Cassatio en Sib Majeur ; Pastorale Allegro. (p.13)*
- 11 Minuetto. (p.15)*
- 12 Trio. (p.16)*
- 13 Allegro. (p.17)*
- 14 Divertimento en Ré majeur; Entrée , Allegro (p.18)*
- 15 Andantino (p.20)*
- 16 Paysanne (p.21)*
- 17 Menuet 1 (p.22)*
- 18 Menuet 2 (p.23)*
- 19 Polonoise (p.23)*