

# Samba medley

Sókkerpop (Suikerbossie)

Musical notation for the first piece, 'Sókkerpop (Suikerbossie)'. It consists of two staves of music in 4/4 time. The first staff begins with a double bar line and repeat sign. The second staff contains two first endings, labeled '1.' and '2.', which lead to a double bar line and repeat sign.

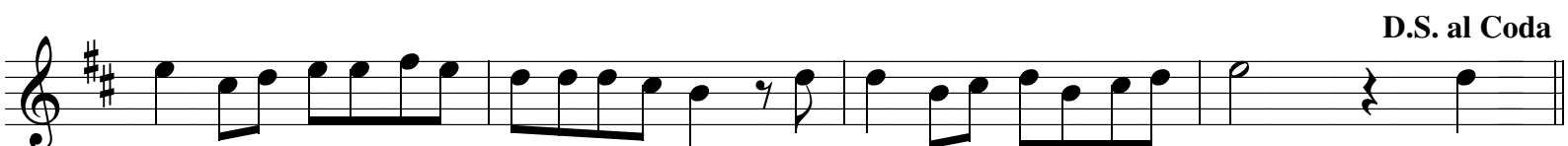
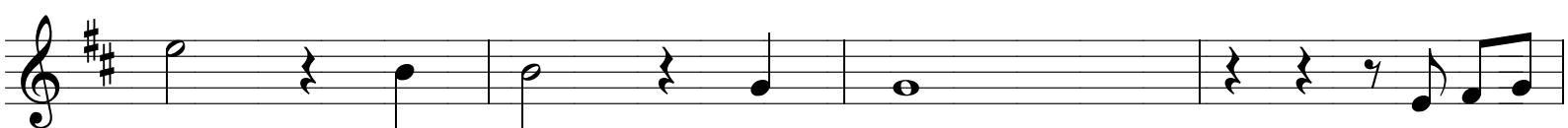
Wat 'ne poen (Oh, what a kiss)

Musical notation for the second piece, 'Wat 'ne poen (Oh, what a kiss)'. It consists of six staves of music in 4/4 time. The first staff begins with a double bar line and repeat sign. The second and third staves feature a melodic line with eighth notes and a bass line with triplets. The fourth and fifth staves continue the melodic line. The sixth staff concludes with a first ending labeled '1.' and a double bar line.

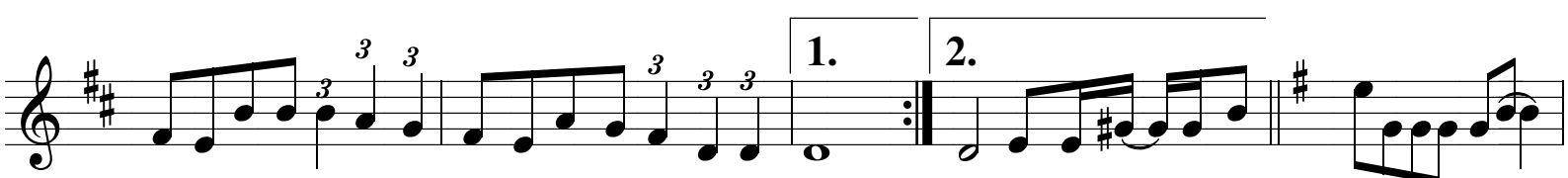
Awhoor, awhoor (Amor)

Musical notation for the third piece, 'Awhoor, awhoor (Amor)'. It consists of two staves of music in 4/4 time. The first staff begins with a first ending labeled '2.' and a treble clef with a key signature of two sharps (D major). The second staff continues the melodic line.

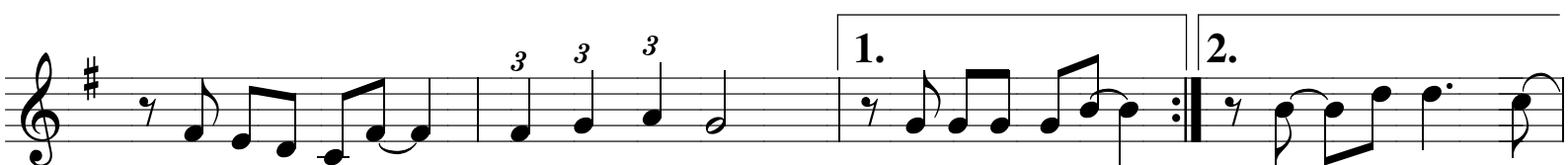
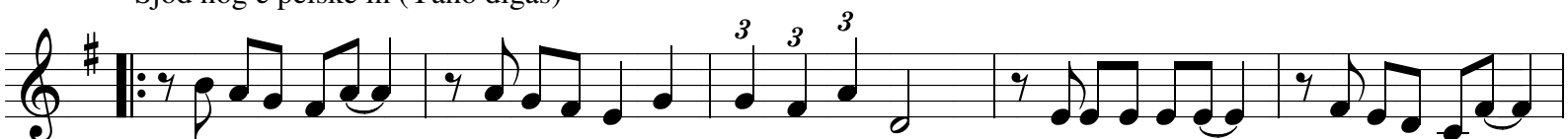
# Samba Medley



 Coda Jao veer zien vaan Mestreech (Mudurero Choru)



Sjöd nog e pèlske in (Yano digas)



Dans de Samba (Tristeza)

