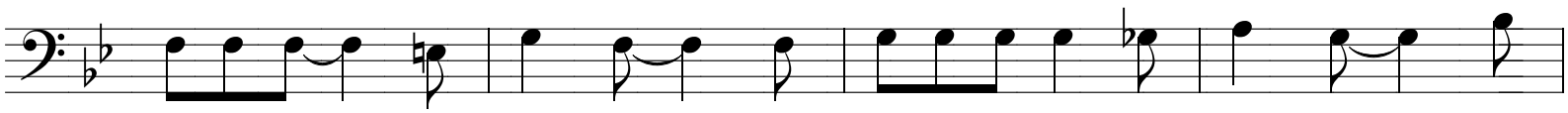


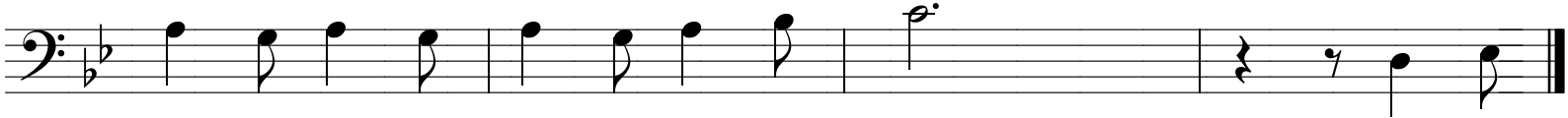
Op 't Vriethof op 'n baank

A musical score for a piece titled '*Op 't Vriethof op 'n baank*'. The score is written in bass clef with a key signature of two flats (B-flat and E-flat) and a 6/8 time signature. It consists of 14 staves of music. The notation includes various note values (quarter, eighth, and sixteenth notes), rests, and slurs. A repeat sign with first and second endings is present at the beginning of the third staff. The piece concludes with a 'To Coda' instruction on the 13th staff, followed by a double bar line and a final cadence on the 14th staff.

Op 't Vriethof op 'n baank



D.S. al Coda



⊕ *Coda*

