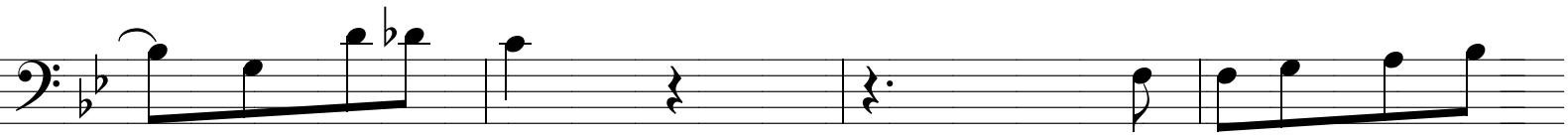
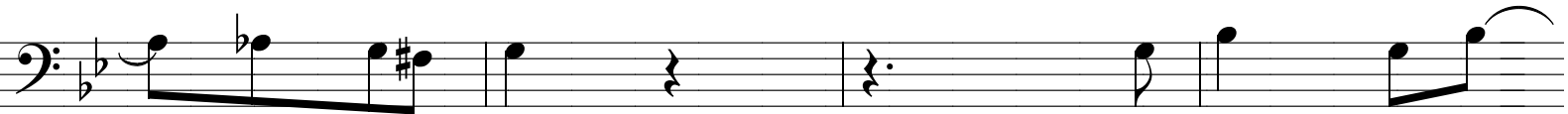
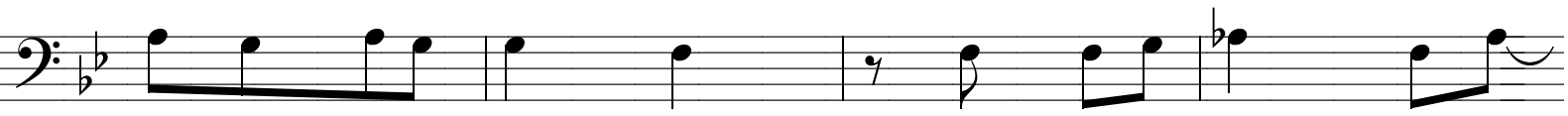
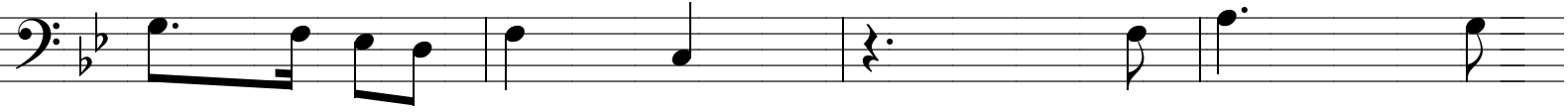


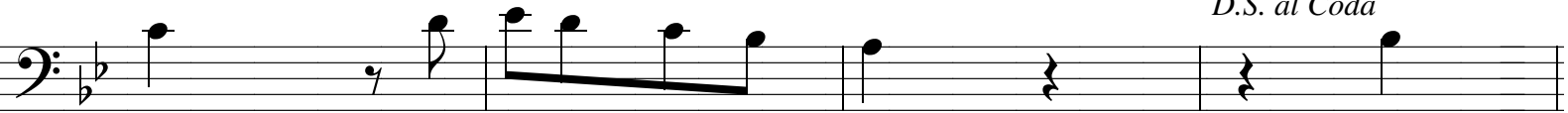
This image displays a page of musical notation for a bass line, written in 2/4 time and the key of B-flat major (two flats). The notation is organized into ten horizontal staves. The first staff begins with a treble clef and a 2/4 time signature. The second staff contains a complex rhythmic pattern with sixteenth notes. The third staff starts with a repeat sign and a fermata over the first note. The fourth staff features a long note with a fermata. The fifth staff has a similar long note with a fermata. The sixth staff contains a long note with a fermata. The seventh staff has a long note with a fermata. The eighth staff has a long note with a fermata. The ninth staff includes a first ending bracket labeled '1.' and a second ending bracket labeled '2.'. The tenth staff concludes the piece with a final note and a fermata.



*To Coda*



*D.S. al Coda*



⊕ *Coda*

